

ErneAI: Deeply Analyze your Pickleball SoundScape

WHAT IS ERNE?

Environmental Residential Noise Examination (ERNE) is an AI tool that combines generative pretrained transformers (GPTs), Geographical Information Services (GIS), noise mapping and acoustic analysis.

A chat interface allows you to interact with your report data



A DYNAMIC REPORTING TOOL

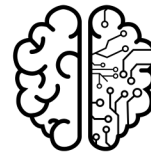
ERNE will deliver reports to your inbox, stay current on data, alert you on updates, and provide you easy ways to analyze complex sound engineering information.

LEVERAGING BIG DATASETS

Includes information from millions of different texts including books, websites, scientific papers, news articles, and other forms of written content. Data paired with GIS, noise mapping, acoustic analysis and U.S. government data

EXPERTLY REVIEWED AND VERIFIED

We partner with PhDs supporting leading research institutions such as MIT, Stanford, University of Kansas and the Acoustic Society of America. Each report is verified by an expert prior to delivery.



Expert Validation
PhDs verify and review all reports prior to publishing



Drive Compliance
Draw from local ordinances, insights on community standards



Robust Context
Reference data, links, articles, case law, city / county documentation and social media



Dynamic Updates
Data assets are refreshed regularly

PLAN SMART, SAVE BIG

Avoid expensive and unnecessary fieldwork. Identify problem areas faster. Learn fast, get questions answered quickly with context.

FAST TIME TO VALUE

Analysis conducted in real-time and report content is verified within 24 hours.

DIFFERENCE MAKERS

MAIN FEATURE COMPARISON	ERNE	Engineer
Dynamic Data	✓	✗
Conversational Interface	✓	✗
Static Report	✓	✓
Sound Propagation Analysis	✓	✓
Research Reference Links, Sources	✓	✗
Engineer Verified	✓	✓

CONNECT WITH US TODAY



HELLO@SLNCR.COM



@GETSLNCR